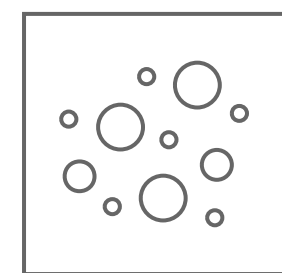


EN



INDUSTRIAL VACUUM CLEANERS



Chips and Dust
Catalogue

italy*vacuum
GROUP



Technology, innovation at the highest level, and **good Italian design** as easily understood from the company name are the constitutional elements of the company's DNA.

Strengthened by the long and profound experience of its staff in the specific sector, the company produces **"customer-oriented" vacuum cleaners** that can adapt with flexibility to various needs.

It is placed on the world market as one of the few companies that can boast a series of products that make use of both **centrifugal fans** and powerful **side channel turbines**, thus, offering a very wide range of 360° product line, adaptable to any application sector, and usable in any work environment.



The corporate philosophy that animates Italyvacuum, does not accept downward compromises and adopts construction and design systems that are absolutely avant-garde in the sector, the result of precise mathematical calculations which together with the experience of its staff have guided the company towards precise purely technical choices such as:

- **Integrated cyclonic system with tangential inlet** of the aspirated material on all the models thus eliminating the maintenance of the filters. The first company in the world to offer this performance across the whole range;
- **Human-Machine-Interface with advanced “touch screen” technology** for optimizing and simplifying all the functions of the vacuum cleaner;
- **Dedicated software and advanced digital sensor system** for reading and signaling to the operator of the level of contamination of the filters;
- **Cleaning systems of filters in an exclusively automatic form** through special systems that when combined with each other ensure maximum efficiency over time.

Total remote supervision of production in real time





- **Technological and innovative antigrip fabrics** used for filtering surfaces, the result of extensive research in the textile sector;
- **Release of the containers in an extremely ergonomic form** thanks to the innovative and elegant vertical sliding slots obtained directly from the tubes that make up the frame;
- **New generation silencers with very high sound-absorbing performances** specially designed by the technicians of the R&D department that make Italyvacuum products the most silent vacuum cleaners in the sector;
- **Modular systems exclusively on wheels** that allow the assembly times to be zeroed, a rapid movement in the event of moving and positioning in any geometric shape in order to optimize each available space;
- **Centralized systems** equipped with sorting valves programmable via digital platform to **optimize performance and reduce energy consumption.**



TCS - Touch Control Station

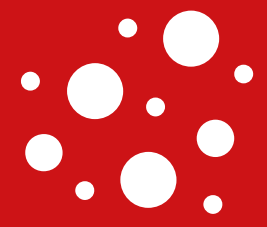
Human Machine Interface

The powerful software station called **TCS** which manages the sophisticated electronics of which Italyvacuum vacuum cleaners are equipped, allows **remote management in "real time" of all the vacuum cleaners present** in a company.

Through this technology, it is possible to optimize their performance, carry out preventive maintenance if necessary and interface with the various management software already present in order to avoid any possible interruption of the production cycle.

Extremely intuitive and easily usable by anyone thanks to its icons, appears to be perfectly in line with all the mandatory requirements from the **industry 5.0 plan: interconnection and automation of production processes.**

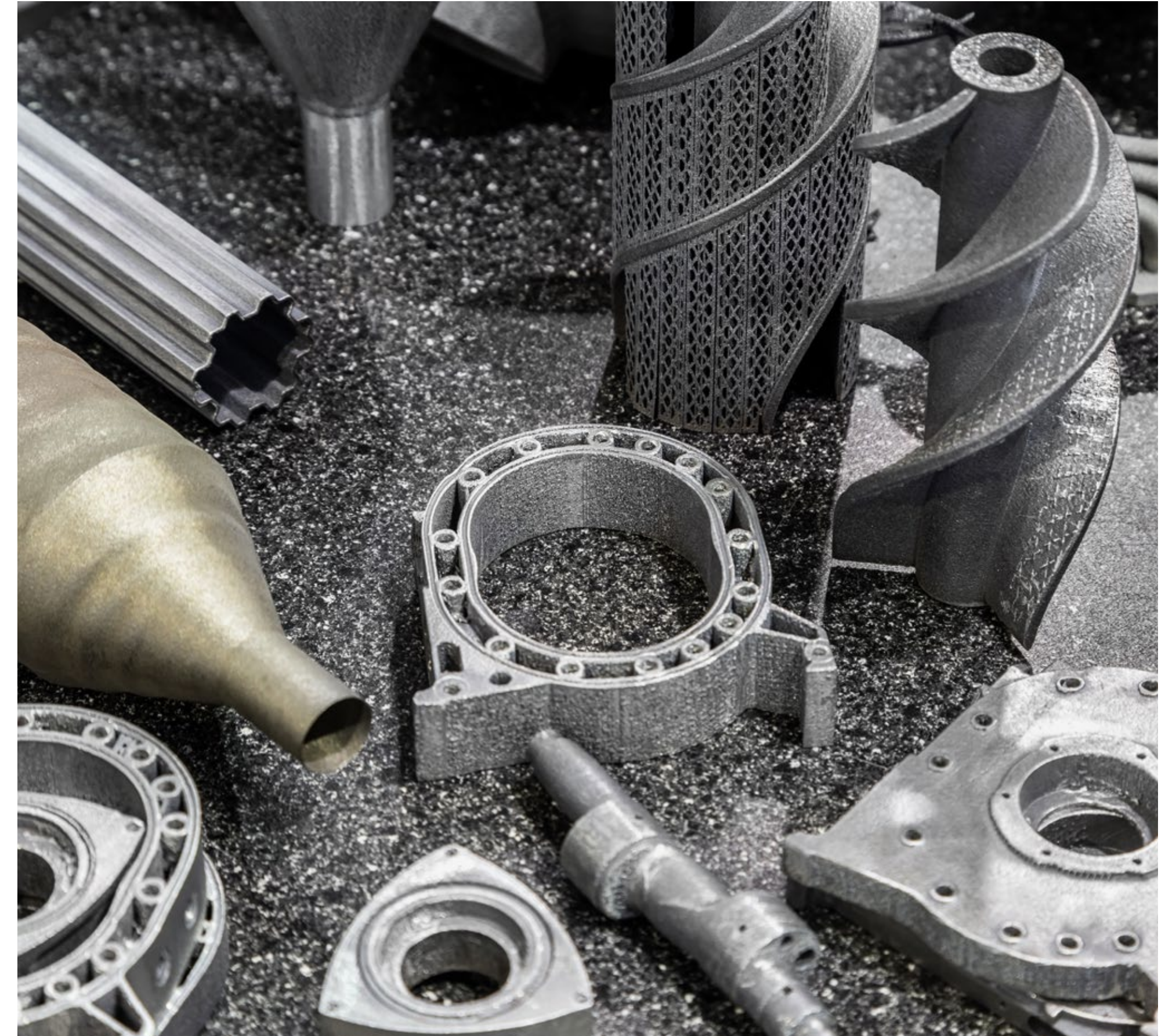
Chips & Dust Division



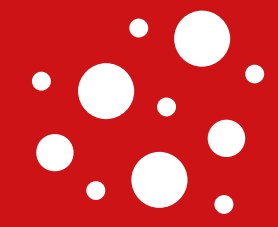
Italyvacuum has long been a **partner of some of the largest companies in Europe** specialized in processes that produce waste from all types of materials in every possible form.

The experience of its technicians has enabled the development of **a product line specifically dedicated to every type of chips and dust from the most varied processes**, both food and non-food, and tailored for both small craftsmen and large industries.

With several patented products and various uncommon solutions, the vacuum cleaners of Italyvacuum, thanks to their versatility, are capable of collecting chips of any type (long, twisted, etc.) and at the same time **sucking up even very fine or dangerous dust through its Atex vacuum cleaners**, a complete 360-degree "package" tailored for every operator.

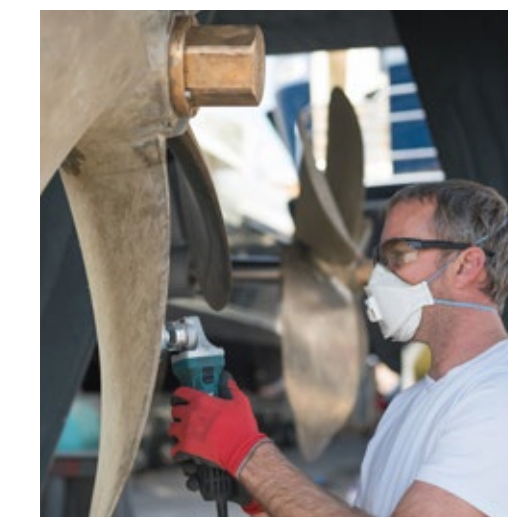
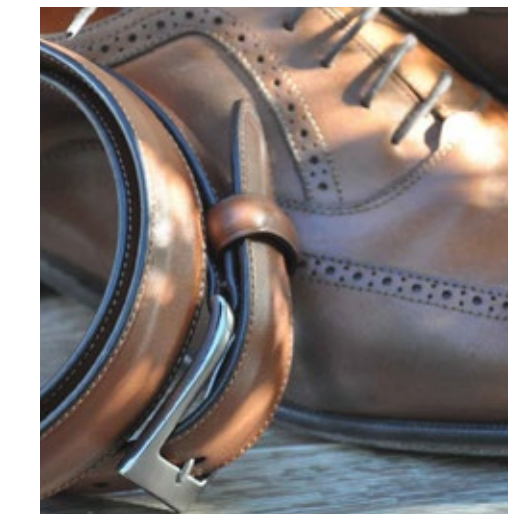
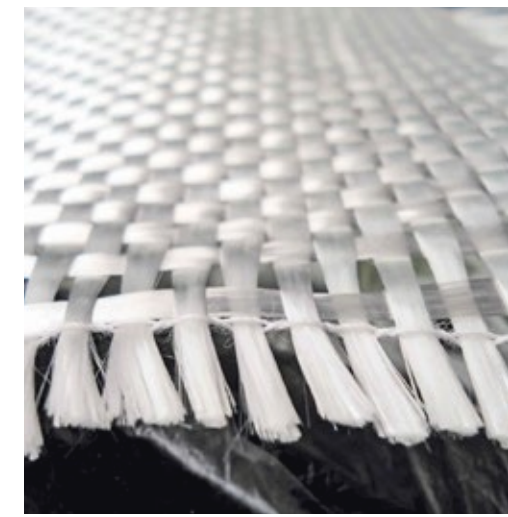
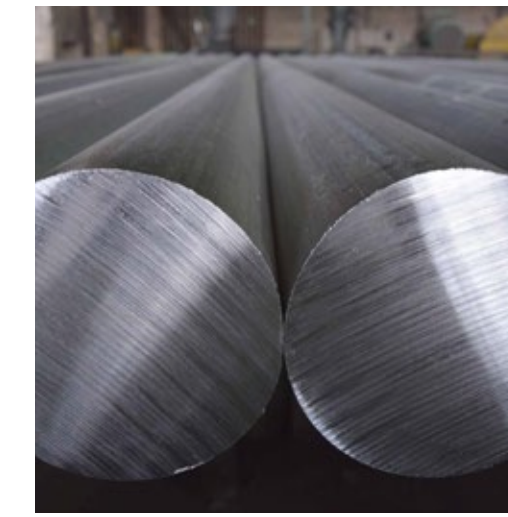
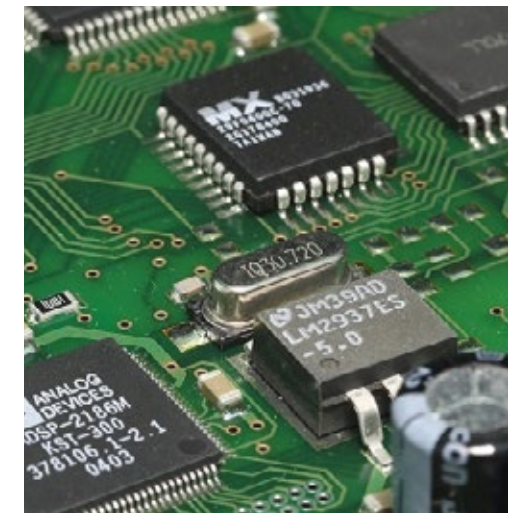


Chips & Dust Division

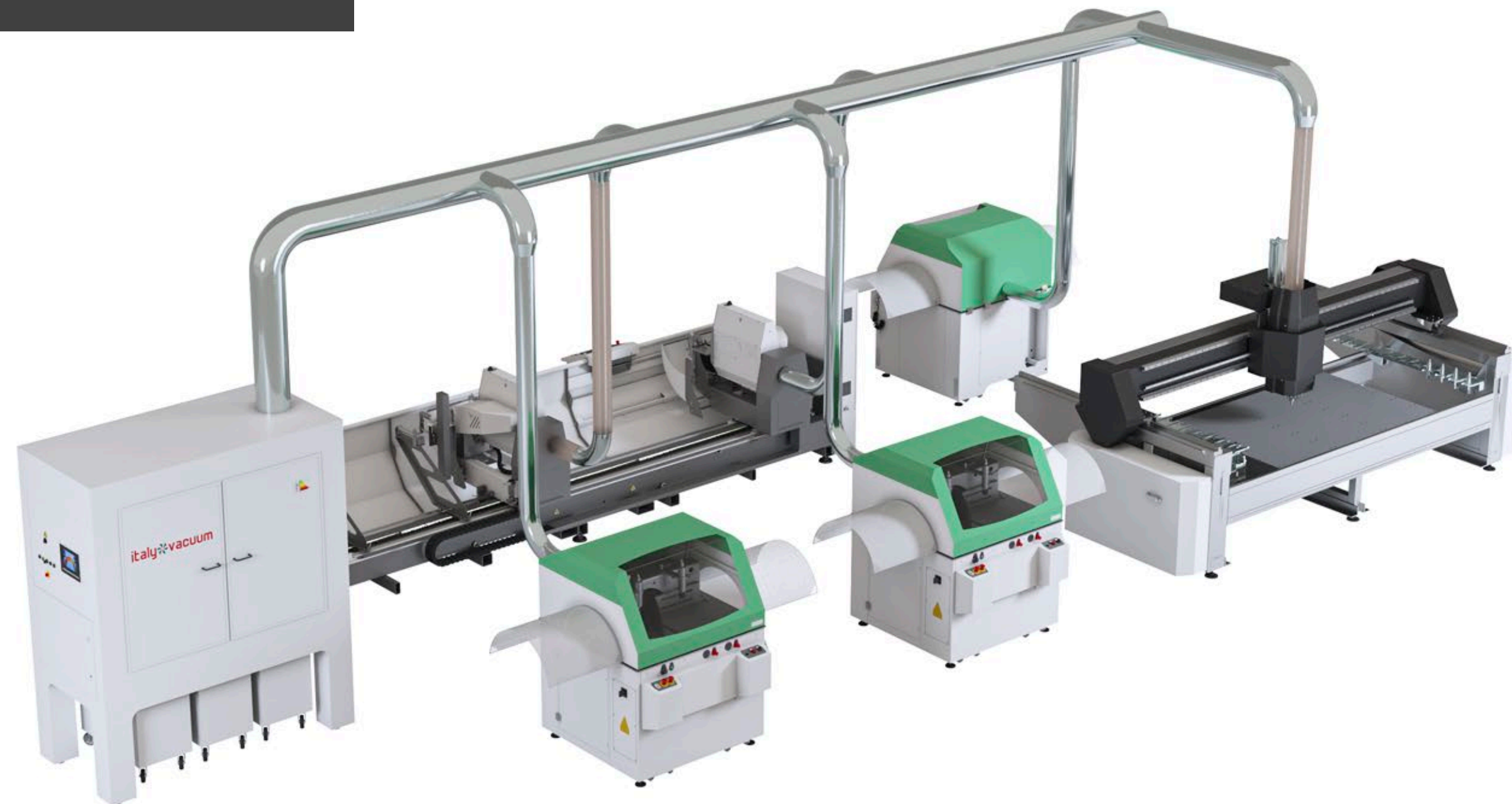


Main applications:

- Extruded profiles cutting
- Sandblasting
- PCB
- General cleaning
- Metal industrial cutting
- CNC machines (panel router)
- Pharma & Food
- Plastics, vinyl and pvc
- Hazardous materials
- Wood and composites
- Packaging
- Leather, fabrics & shoes
- Liquids & chips
- Steelworks and foundries
- Car wash
- Food
- Industrial ovens
- Biomass plants
- Recycling plants
- Explosive powders and casings
- 3D printers
- High-temperature ashes
- Cosmetic Industry
- Shipyards

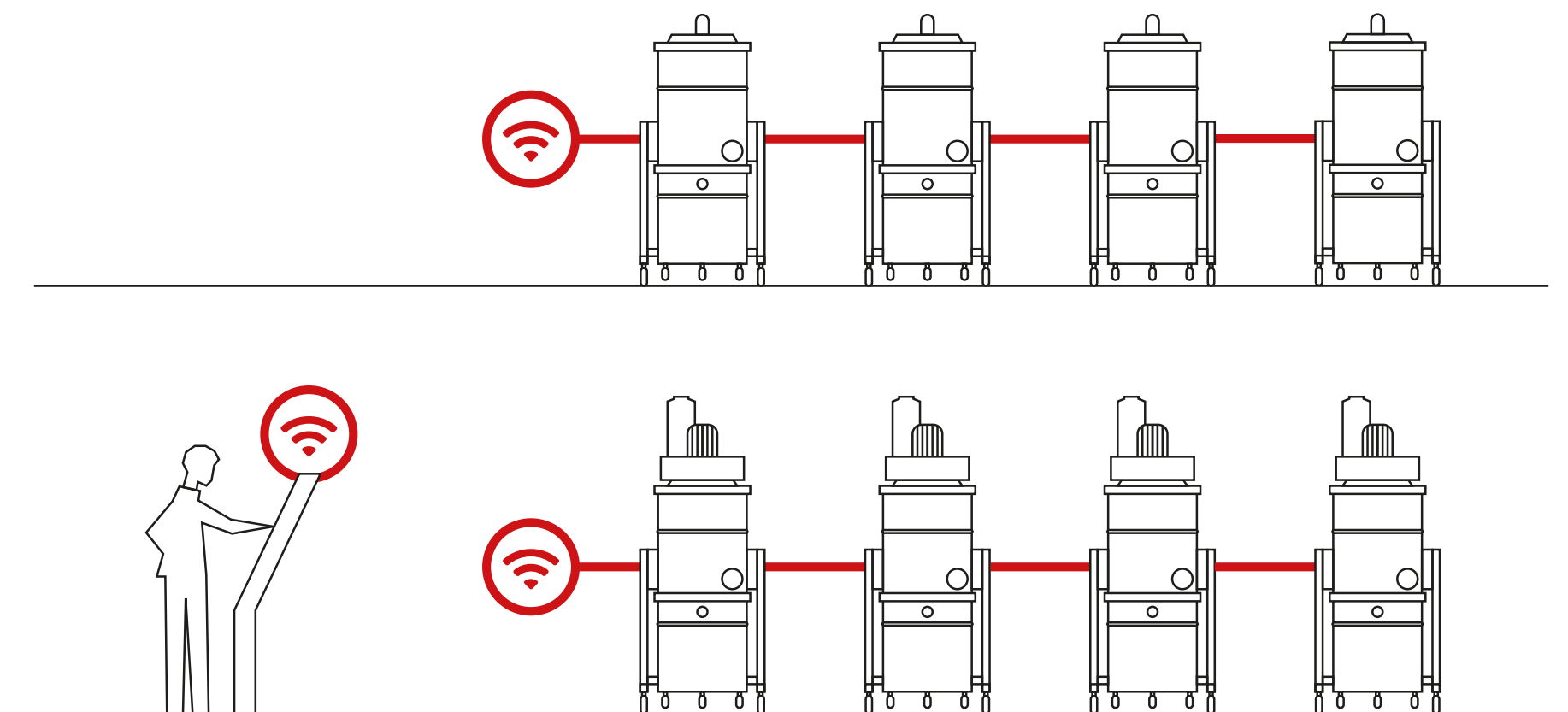


CENTRALIZED SYSTEMS



They are the systems with the highest technological content, where Italyvacuum technicians can express all its potential, and in which it contains the best of its innovations which is **the result of years of research** and the experiences lived over time in the various companies around the world.

All functions can be managed in the traditional way or through the powerful centralized platform **TCS** "Touch control station" - **Smart industry 5.0**.



UNIVERSAL 48

[Fan Top]



Model	FT 2.2
Power [kW]	2.2 (3hp)
Voltage / Frequency [Volts]	400 (50Hz)
Inlet	N°1
Inlet diameter [mm]	100 (3.94") - 120 (4.72")
Filter material	Polyester
Filter cleaning	Pneumatic
Certifications available	C.E. / UL-CSA / cURus
Chips container [Lt]	110 (30gal)
Shipping dimensions [mm]	800 (32") x 1200 (47") x 2200H (86")
Max air flow [m ³ /h]	1500 (882cfm)
Max vacuum [mbar]	30 (0,43Psi)
Net Weight [kg]	130 (286 lb)

* Available also in **ATEX version** and in **all voltages and frequencies worldwide**

UNIVERSAL 48

[Turbine Top]



Model	TT 2.2	TT 3	TT 4
Power [kW]	2.2 (3hp)	3 (4hp)	4 (5.5hp)
Voltage / Frequency [Volts]	400 (50Hz)		
Inlet	N°1		
Inlet diameter [mm]	100 (3.94") - 120 (4.72") - 160 (6.30")		
Filter material	Polyester		
Filter cleaning	Pneumatic		
Certifications available	C.E. / UL-CSA / cURus		
Chips container [Lt]	110 (30gal)		
Shipping dimensions [mm]	800 (32") x 1200 (47") x 2200H (86")		
Max air flow [m ³ /h]	318 (187cfm)		
Max vacuum [mbar]	210 (3Psi)	270 (3.9Psi)	320 (4.64Psi)
Net Weight [kg]	130 (287 lb)		

* Available **up to 7.5kW** also in **ATEX version** and in **all global voltages and frequencies**

UNIVERSAL 48

[Turbine Back]



Model	TB 3	TB 4	TB 5.5
Power [kW]	3 (4hp)	4 (5.5hp)	5.5 (7.4hp)
Voltage / Frequency [Volts]	400 (50Hz)		
Inlet	N°1		
Inlet diameter [mm]	100 (3.94") - 120 (4.72") - 160 (6.30")		
Filter material	Polyester		
Filter cleaning	Pneumatic		
Certifications available	C.E. / UL-CSA / cURus		
Chips container [Lt]	110 (30gal)		
Shipping dimensions [mm]	800 (32") x 1300 (51") x 2200H (86")		
Max air flow [m ³ /h]	318 (187cfm)	318 (187cfm)	530 (311cfm)
Max vacuum [mbar]	270 (3.9Psi)	320 (4.64Psi)	270 (3.9Psi)
Net Weight [kg]	130 (287 lb)		160 (353 lb)

* Available **up to 7.5kW** also in **ATEX version** and in **all global voltages and frequencies**

VORTEX 58

[Fan Top]



Model	FT 2.2	FT 3	FT 4
Power [kW]	2.2 (3hp)	3 (4hp)	4 (5.5hp)
Voltage / Frequency [Volts]	400 (50Hz)		
Inlet	N°2		
Inlet diameter [mm]	100 (3.94") - 120 (4.72") - 160 (6.30")		
Filter material	Polyester		
Filter cleaning	Pneumatic		
Certifications available	C.E. / UL-CSA / cURus		
Chips container [Lt]	175 (46gal)		
Shipping dimensions [mm]	800 (32") x 1200 (47") x 2200H (86")		
Max air flow [m ³ /h]	1500 (882cfm)	2600 (1530cfm)	2900 (1706cfm)
Max vacuum [mbar]	28 (0.4Psi)		
Net Weight [kg]	150 (331 lb)		

* Available **up to 25kW** also in **ATEX version** and in **all global voltages and frequencies**

VORTEX 58

[Fan Back]



Model	FB 4	FB 7.5
Power [kW]	4 (5.5hp)	7.5 (10hp)
Voltage / Frequency [Volts]	400 (50Hz)	
Inlet	N°2	
Inlet diameter [mm]	100 (3.94") - 120 (4.72") - 160 (6.30")	
Filter material	Polyester	
Filter cleaning	Pneumatic	
Certifications available	C.E. / UL-CSA / cURus	
Chips container [Lt]	175 (46gal)	
Shipping dimensions [mm]	900 (35") x 1600 (63") x 2200H (87")	950 (37") x 1600 (63") x 2200H (87")
Max air flow [m ³ /h]	2300 (1354cfm)	3100 (1825cfm)
Max vacuum [mbar]	60 (0.87Psi)	80 (1.16Psi)
Net Weight [kg]	230 (507 lb)	250 (551 lb)

* Available **up to 25kW** also in **ATEX version** and in **all global voltages and frequencies**

VORTEX 58

[Turbine Top]



Model	TT 2.2	TT 3	TT 4
Power [kW]	2.2 (3hp)	3 (4hp)	4 (5.5hp)
Voltage / Frequency [Volts]	400 (50Hz)		
Inlet	N°2		
Inlet diameter [mm]	100 (3.94") - 120 (4.72") - 160 (6.30")		
Filter material	Polyester		
Filter cleaning	Pneumatic		
Certifications available	C.E. / UL-CSA / cURus		
Chips container [Lt]	175 (46gal)		
Shipping dimensions [mm]	800 (32") x 1200 (47") x 2200H (86")		
Max air flow [m ³ /h]	318 (187cfm)		
Max vacuum [mbar]	210 (3Psi)	270 (3.9Psi)	320 (4.64Psi)
Net Weight [kg]	160 (353 lb)		

* Available **up to 25kW** also in **ATEX version** and in **all global voltages and frequencies**

VORTEX 58

[Turbine Back]



Model	TB 3	TB 4	TB 5.5
Power [kW]	3 (4hp)	4 (5.5hp)	5.5 (7.4hp)
Voltage / Frequency [Volts]	400 (50Hz)		
Inlet	N°2		
Inlet diameter [mm]	100 (3.94") - 120 (4.72") - 160 (6.30")		
Filter material	Polyester		
Filter cleaning	Pneumatic		
Certifications available	C.E. / UL-CSA / cURus		
Chips container [Lt]	175 (46gal)		
Shipping dimensions [mm]	800 (32") x 1200 (47") x 2200H (86")		
Max air flow [m ³ /h]	318 (187cfm)	318 (187cfm)	530 (312cfm)
Max vacuum [mbar]	270 (3.9Psi)	320 (4.64Psi)	270 (3.9Psi)
Net Weight [kg]	170 (375 lb)		

* Available **up to 25kW** also in **ATEX version** and in **all global voltages and frequencies**

MAXI VORTEX 58

[Fan Top]



Model	FT 2.2	FT 3	FT 4
Power [kW]	2.2 (3hp)	3 (4hp)	4 (5.5hp)
Voltage / Frequency [Volts]	400 (50Hz)		
Inlet	N°2		
Inlet diameter [mm]	100 (3.94") - 120 (4.72") - 160 (6.30")		
Filter material	Polyester		
Filter cleaning	Pneumatic		
Certifications available	C.E. / UL-CSA / cURus		
Chips container [Lt]	175 (46gal)		
Shipping dimensions [mm]	800 (32") x 1200 (47") x 2400H (94.5")		
Max air flow [m ³ /h]	1500 (882cfm)	2600 (1530cfm)	2900 (1706cfm)
Max vacuum [mbar]	28 (0.4Psi)		
Net Weight [kg]	160 (353 lb)		

* Available **up to 25kW** also in **ATEX version** and in **all global voltages and frequencies**

MAXI VORTEX 58

[Fan Back]



Model	FB 4 - 2300	FB 4 - 4000	FB 7.5
Power [kW]	4 (5.5hp)	4 (5.5hp)	7.5 (10hp)
Voltage / Frequency [Volts]	400 (50Hz)		
Inlet	N°2		
Inlet diameter [mm]	100 (3.94") - 120 (4.72") - 160 (6.30")		
Filter material	Polyester		
Filter cleaning	Pneumatic		
Certifications available	C.E. / UL-CSA / cURus		
Chips container [Lt]	175 (46gal)		
Shipping dimensions [mm]	900 (35") x 1600 (63") x 2200H (86")		
Max air flow [m ³ /h]	2300 (1354cfm)	4000 (2295cfm)	2600 (1825cfm)
Max vacuum [mbar]	60 (0.87Psi)	28 (0.4Psi)	80 (1.16Psi)
Net Weight [kg]	230 (507 lb)		

* Available **up to 25kW** also in **ATEX version** and in **all global voltages and frequencies**

MAXI VORTEX 58

[Turbine Top]



Model	TT 2.2	TT 3	TT 4
Power [kW]	2.2 (3hp)	3 (4hp)	4 (5.5hp)
Voltage / Frequency [Volts]	400 (50Hz)		
Inlet	N°2		
Inlet diameter [mm]	100 (3.94") - 120 (4.72") - 160 (6.30")		
Filter material	Polyester		
Filter cleaning	Pneumatic		
Certifications available	C.E. / UL-CSA / cURus		
Chips container [Lt]	175 (46gal)		
Shipping dimensions [mm]	800 (32") x 1200 (47") x 2400H (94.5")		
Max air flow [m ³ /h]	318 (187cfm)		
Max vacuum [mbar]	210 (3Psi)	270 (3.9Psi)	320 (4.64Psi)
Net Weight [kg]	160 (353 lb)		

* Available **up to 25kW** also in **ATEX version** and in **all global voltages and frequencies**

MAXI VORTEX 58

[Turbine Back]



Model	TB 5.5	TB 7.5	TB 12.5
Power [kW]	5.5 (7.4hp)	7.5 (10hp)	12.5 (17hp)
Voltage / Frequency [Volts]	400 (50Hz)		
Inlet	N°2		
Inlet diameter [mm]	100 (3.94") - 120 (4.72") - 160 (6.30")		
Filter material	Polyester		
Filter cleaning	Pneumatic		
Certifications available	C.E. / UL-CSA / cURus		
Chips container [Lt]	175 (46gal)		
Shipping dimensions [mm]	800 (32") x 1200 (47") x 2200H (86")		800 (32") x 1600 (63") x 2200H (86")
Max air flow [m ³ /h]	530 (311cfm)	530 (311cfm)	1050 (618cfm)
Max vacuum [mbar]	270 (3.9Psi)	320 (4.64Psi)	270 (3.9Psi)
Net Weight [kg]	180 (397 lb)		270 (595 lb)

* Available **up to 25kW** also in **ATEX version** and in **all global voltages and frequencies**

BLOW



Watch the video



Model	4	7.5
Power [kW]	4 (5hp)	7.5 (10hp)
Voltage / Frequency [Volts]	400 (50Hz)	
Inlet	N°1	
Inlet diameter [mm]	200 (7.87")	
Filter material	Polyester	
Filter cleaning	Not necessary	
Certifications available	C.E. / UL-CSA / cURus	
Chips container [Lt]	Rotary valve 24h	
Shipping dimensions [mm]	1200 (47") x 2000 (79") x 2200H (86")	
Max air flow [m ³ /h]	2600 (1530cfm)	3200 (1885cfm)
Max vacuum [mbar]	40 (0,58Psi)	
Net Weight [kg]	350 (771 lb)	400 (882 lb)

* Available **up to 24kW** also in **ATEX version** and in **all global voltages and frequencies**

SAFEDUST



High-Security Industrial Vacuum for Harmful and Explosive Dusts (ATEX 22)

Safedust represents the ultimate solution for the **safe management of harmful or potentially explosive dusts**, an advanced device designed to ensure maximum efficiency and safety in the most demanding industrial environments.

Instant Neutralization



GENERAL INFORMATION

Motors available	from 4kW (5.5hp) to 25kW (34hp) - Trubine
N° inlet [Ø]	N°1 [100mm - 3.94"]
Container capacity	110 Lt (30gal) / 175 Lt (46gal)
Certifications available	C.E. / UL-CSA / cURus

* Model available in all global voltages and frequencies

CONTAINER



The containers of the chips and dust division are specially designed to **contain large quantities of dust or chips** and are usually placed between the suction point and the aspirator itself.

The traditional aspirators on the market have a maximum capacity of 160-180 liters and **for customers who use automatic work centers** that carry out continuous work (24 hours a day) this capacity is absolutely limited, forcing them to stop the production process and empty the waste containers too frequently.

When it is necessary to empty the contents into an even larger container sometimes positioned outside the factory, the operation is possible with only the operator driving the forklift which, thanks to the aid of a **particular release mechanism**, allows controlled overturning and the consequent **emptying in total autonomy**.

GENERAL INFORMATION

Container capacity	600 Lt (159gal) / 1100 Lt (291gal) / 2200 Lt (581gal)
Note	Automatic pedal opening, Also available without an airtight lid

CYCLONES & HYPER- CYCLONES



They are provided in **various size and shapes** according to the system they are to be connected to and the different type of material to be vacuumed.

They are **specially useful in preventing the clogging of filters** and consequently prolonging their life, and are sometimes mandatory for the treatment of certain types of very fine dust or metallic/plastic or composite chips that can vary in shape and weight.

Main advantages:

- High efficiency in dust recovery;
- Total lack of maintenance thanks to the absence of moving parts;
- Requirement of limited spaces for the implementation of the system;
- No limitation of performance in case of extreme temperatures;
- Possibility of having them both anchored to the ground and mobile on wheels owing it to the extreme flexibility of the system.

MINI BLOW



Expressly **dedicated to production lines in various sectors, they are designed in a compact manner** to occupy as little space as possible and can be mounted on trolleys, both fixed and mobile, along a production line or on-board machinery.

Required in sectors where people normally work 24 hours in **order to never interrupt the work flow**, they are equipped at the base of the central unit **with a fully automated and programmable opening door for unloading the vacuumed material**, based on the required frequency.

GENERAL INFORMATION

Motors available	from 4kW (5.5hp) to 16kW (21.5hp) - Fan from 4kW (5.5hp) to 16kW (21.5hp) - Turbine
N° inlet [Ø]	N°1 [200mm - 7.87"]
Note	Programmable opening door for unloading
Certification available	C.E. / UL-CSA / cURus

* Model available also in **ATEX version** and in **all global voltages and frequencies**

SKID



Particularly suitable for **environments where you work 24/7**, it takes full advantage of the special characteristics of the rotary valve supplied and its special fan which not only allows the suction of large volumes of material from a considerable distance but in the case of metal waste, it contributes to their **total or partial disintegration**.

The powerful cyclonic effect that is created inside the suction chamber allows to generate **a strong acceleration of the material** inside, thus allowing the suction of even long and twisted metal shavings which are difficult to manage, and results to avoiding the well-known problems of the case.

GENERAL INFORMATION

Motors available	from 4kW (5.5hp) to 24kW (33hp) - Fan
N° inlet [Ø]	N°1 [200mm - 7.87"]
Note	24H continuous unloading on containers or big bags
Certifications available	C.E. / UL-CSA / cURus

* Model available also in **ATEX version** and in **all global voltages and frequencies**

INNOVA



Model	Standard
Power [kW]	4 (5hp)
Voltage / Frequency [Volts]	400 (50Hz)
Inlet	N°1
Inlet diameter [mm]	200 (7.87")
Filter material	Polyester
Filter cleaning	Not necessary
Certifications available	C.E. / UL-CSA / cURus
Chips container [Lt]	Rotary valve 24h
Shipping dimensions [mm]	800 (32") x 2000 (79") x 2200H (86")
Max air flow [m ³ /h]	2600 (1530cfm)
Max vacuum [mbar]	40 (0,58Psi)
Net Weight [kg]	350 (771 lb)

* Available **up to 24kW** also in **ATEX version** and in **all global voltages and frequencies**

MASTER CLEAN



Model	2.2	3	4
Power [kW]	2.2 (3hp)	3 (4hp)	4 (5.5hp)
Voltage / Frequency [Volts]	400 (50Hz)		
Inlet	N°1		
Inlet diameter [mm]	70 (2.75") - 100 (3.94")		
Broom Width [mm]	900 (35")		
Certifications available	C.E. / UL-CSA / cURus		
Container capacity [Lt]	65 (17gal)		
Shipping dimensions [mm]	800 (32") x 1200 (47") x 2200H (86")		
Max air flow [m ³ /h]	318 (187cfm)		
Max vacuum [mbar]	210 (3Psi)	270 (3.9Psi)	290 (4.2Psi)
Net Weight [kg]	120 (265 lb)		

* Model available also in **ATEX version** and in **all global voltages and frequencies**

LONGPACK



A powerful turbine vacuum cleaner **dedicated to collecting fine dust** from sanding floors or large surfaces.

Longpack is **typically connected to sanding machines** that smooth and uniform surfaces, removing stains, scratches, or any imperfections, producing **dry dust that can also be harmful** due to the chemicals released during processing. To this end, Longpack is equipped for their collection with a practically **infinite plastic bag (endless Bag)** to prevent the slightest escape of such substances, ensuring maximum safety not only during processing but especially in their disposal.

GENERAL INFORMATION

Motors available	from 3kW (4hp) to 4kW (5.4hp) - Turbine
N° inlet [Ø]	N°1 [100mm - 3.94"]
Certification available	C.E. / UL-CSA / cURus

* Model available also in ATEX version and in all global voltages and frequencies

DEDUSTER



Industrial Cartridge Dust Collectors for Dust and Chips

Our series of cartridge dust collectors is designed to offer a highly efficient solution for managing chips, dust, and other types of contaminants resulting from various processes.

System Modularity

The range features a modular design that allows for easy expansion and adaptation to increasing production needs. The modular system permits adding or removing of filter units with ease, thus improving the flexibility of the installation.

GENERAL INFORMATION

Available models

Deduster 6 / Deduster 12 / Deduster 18

* Model available also in ATEX version and in all global voltages and frequencies

ROTOVAC



The Rotovac vacuum cleaner is a notably functional product for the chips and dust division. These industrial vacuum cleaners are required in sectors where operations typically run 24/7 to maintain a **continuous workflow**. The central unit base is equipped with a rotary valve that **continuously discharges material** either into a big bag or a wheeled container. For fine dust suction, they are equipped with a highly efficient cyclone separator as a standard, specifically designed for this purpose.

The powerful motorization with its special characteristics allows these units to **suction materials from considerable distances**. Distinctly powerful and high-performing, they are essential for large cutting centers and/or automatic saws dedicated to heavy-duty work.

GENERAL INFORMATION

Motors available	from 2.2kW (3hp) to 8kW (10.7hp) - Fan
N° inlet [Ø]	N°1 [160mm - 6.30"]
Note	24H continuous unloading on containers or big bag
Certifications available	C.E. / UL-CSA / cURus

* Model available also in **ATEX version** and in **all global voltages and frequencies**

TWIN



The Twin model represents a **highly innovative** and **versatile** solution for managing chips and dust, standing out for its extraordinary performance and operational reliability, making it ideal for meeting the most demanding needs of the industrial sector.

The uniqueness of this model is due to the **double cyclone filtration of incoming material**, which takes place simultaneously within its two upper containers. They are positioned on a **single frame** and feature a **large cyclone suction chamber** to filter the suctioned material and optimally reduce contaminating particles.

GENERAL INFORMATION

Motors available	from 7.5kW (10hp) to 25kW (33.5hp) - Turbine from 7.5kW (10hp) to 25kW (33.5hp) - Fan
N° inlet [Ø]	N°1 [160mm - 6.30" / 200mm - 7.87"]
Container capacity	175 Lt (46gal) + 175 Lt (46gal)
Certification available	C.E. / UL-CSA / cURus

* Model available also in **ATEX version** and in **all global voltages and frequencies**

PROPAINT



Italyvacuum has developed a **series of modular suction walls for painting** to eliminate any risk of inhalation of toxic particles suspended in the air (SOV - COV), which are particularly dangerous pollutants.

They consist of a **robust, powder-coated, scratch-resistant press-folded structure** on which a **high-efficiency fan with a reverse-blade impeller in carbon steel** is mounted.



GENERAL INFORMATION

Available sizes

- 2000 x 2000mm (78.7" x 78.7")
- 3000 x 2000mm (118.1" x 78.7")
- 4000 x 2000mm (157.5" x 78.7")

TORNEX



The Tornex model is the latest evolution in the Italyvacuum range dedicated to the intensive **removal of chips and dust in environments where the presence of particulate matter is high.**

The machine offers unique performance thanks to a powerful cyclonic system that **separates heavy material by gravity**, conveying it into the lower container.

Italyvacuum engineers have designed an **innovative compressed-air cleaning system that rotates around the filter, blowing air through small holes** that increase the cleaning capacity.



GENERAL INFORMATION

Motors available	2.2kW (3hp) or 7.5kW (10hp) - Fan
N° inlet [Ø]	N°1 [100mm - 3.94" / 120mm - 4.72" / 160mm - 6.30"]
Container capacity	175 Lt (46gal)
Certification available	C.E. / UL-CSA / cURus

* Model available also in **ATEX version** and in **all global voltages and frequencies**

ACCESSORIES

[1 of 2]



DCD - Digital Contamination Detector



Remote start on/off



Easy lift



Antistatic



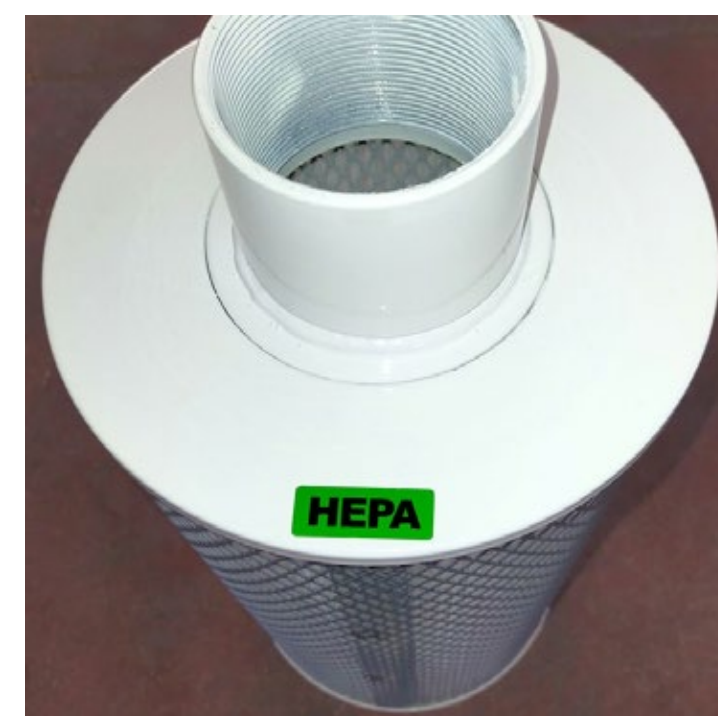
PBR - Plastic Bag Retainer



Manual and automatic gates



Cleaning accessories



HEPA filters



Connectors and reductions



Air hoses

ACCESSORIES

[2 of 2]



Activated carbon filters



Automatic filter cleaning



Liquids and solids separator



Low sound silencers



Aerial support for tubes



Fire Suppression System



Liquid Discharge Valve for Container



TCS - Touch Control Station



Telescopic pipe support

+TECHNOLOGY

+SAVINGS

+EFFICIENCY

Italyvacuum uses only **high-efficiency** premium or super-premium **class motors** that drastically reduce energy consumption through responsible power management. These motors **not only outperform traditional motors** at the same power level, but also maintain high efficiency across varying loads, ensuring **optimal performance** under all operating conditions.

italy  **vacuum**
GROUP

Strada Della Fabbrina 6/E
61122 Pesaro - Italy
Tel. (+39) 0721 62 42 90
info@italyvacuum.com
www.italyvacuum.com

In a continuous effort of research and improvement, Italy Vacuum Srl reserves the right to make changes to products at any time without notice. The values provided are purely indicative.



Respect the environment!
Think before printing
this document.

